



# BRETAGNE



## A STRATEGIC LOCATION

In the heart of Offshore Wind  
& Marine Energies Market

BRETAGNE  
OCEAN PO'//ER

/ Supported by

UNION EUROPÉENNE  
UNANIEZH EUROPA



L'Europe s'engage  
en Bretagne



Avec le Fonds européen  
de développement régional

# 150 COMPANIES to find your right partner

Marine Energy in Brittany is a sector with more than 150 companies working:

- in all MRE technologies
- and at all stages of MRE projects.

Britons companies are already involved in many marine energy project in Europe, such as the Ailes Marines project in Bay of Saint-Brieuc. They are ready for other projects, including the call for tender for the South Brittany floating wind farm.

Find the right partner for your business: more than 150 companies and 26 research labs are referenced by skills in our online directory.



[www.bretagneoceanpower.fr/directory](http://www.bretagneoceanpower.fr/directory)

# 3 TESTS SITES to prove your concept

Open sea test sites are open to your projects, whether they are in the development or pre-commercialization phase. Specialists accompany you from the commissioning to the connection to the network and up to the tests. They host all kinds of marine energies and offshore wind technologies (tidal turbines, floating wind turbines, etc.).

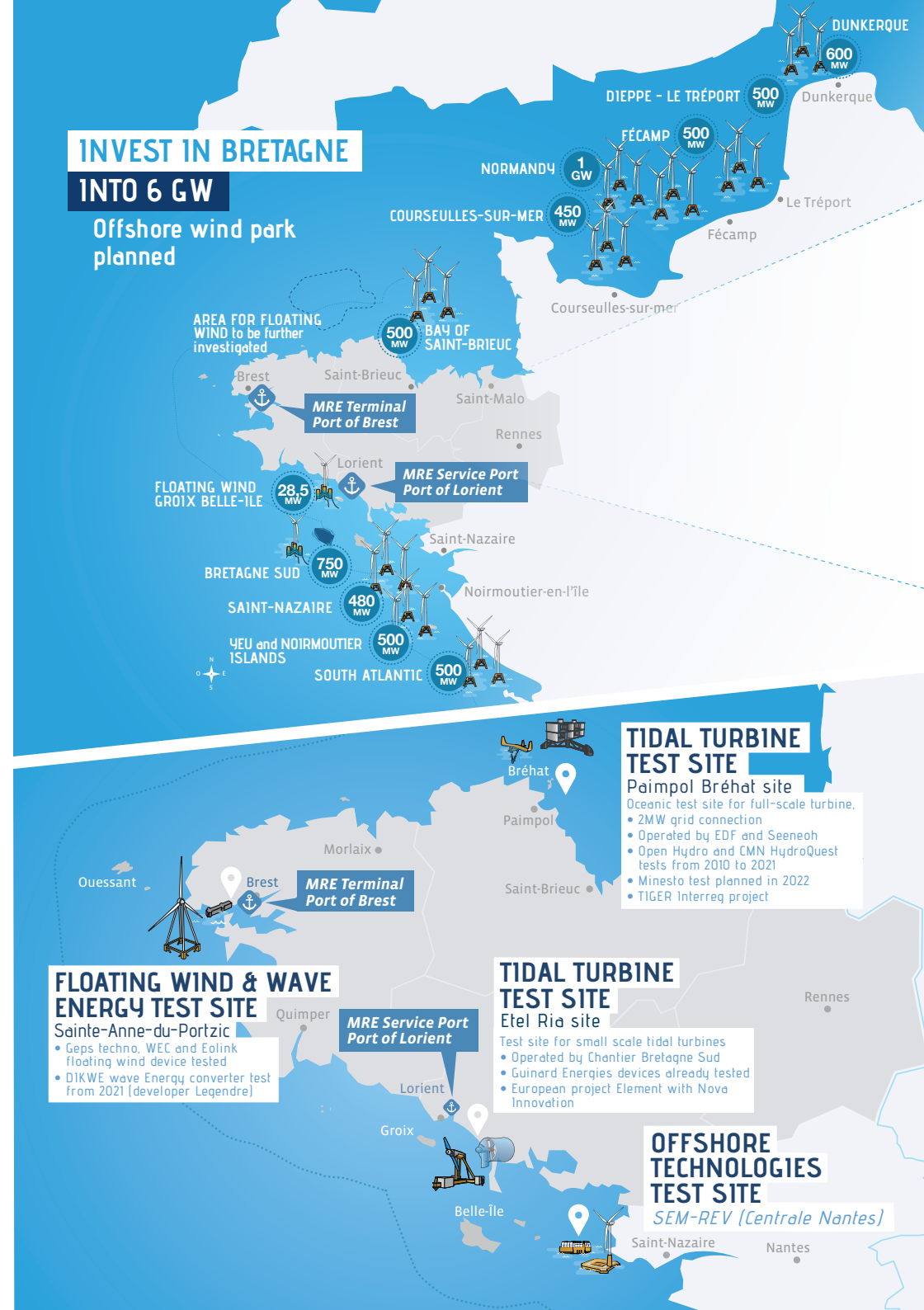
If you need to perfect your technologies, you can count on the expertise of more than 150 companies and research centres dedicated to offshore wind and marine energy technologies in Brittany.

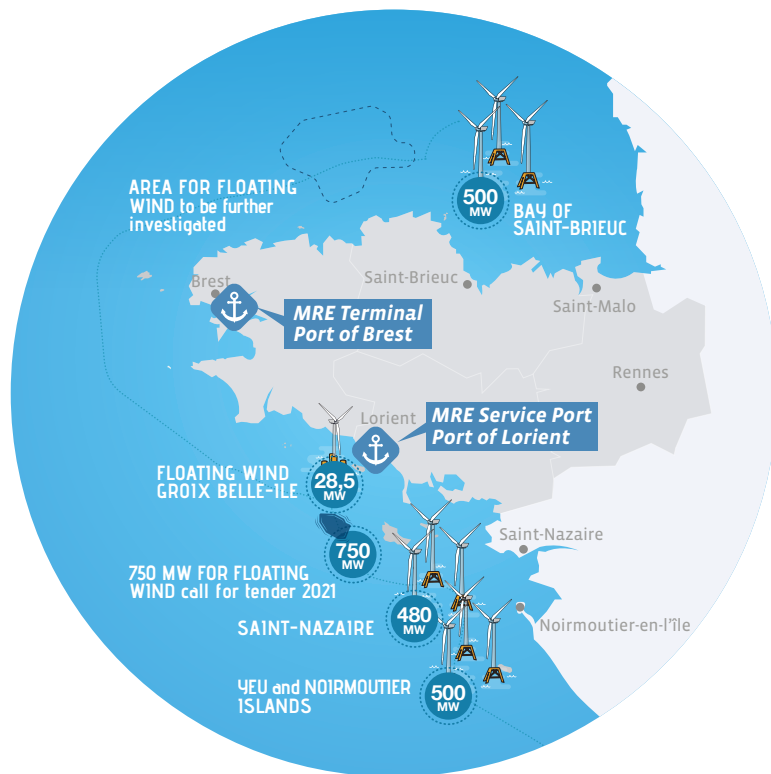
On Paimpol-Brehat test site, European Tiger Project is dedicated to demonstrate that tidal stream energy is a maturing industry, capable of achieving an accelerated cost reduction pathway.



## INVEST IN BRETAGNE INTO 6 GW

Offshore wind park planned





## DEDICATED PORT INFRASTRUCTURE specialised for more efficiency

### PORT OF BREST

A new terminal dedicated to large MRE projects:

- 40 ha** OF INDUSTRIAL LOTS CONNECTED TO SEA AND TRANSPORT NETWORKS
- 400 LM** OF DOCK WITH A HANDLING BERTH OF 100 m WIDTH
- Freight Port and Logistic Hub for European Seaways**
- Heavy Lifting Cranes up to 200 tons**
- 8 m** ACCESS CHANNEL DEPTH: 8 m BELOW CD
- 12 m** BERTH ACCESS: 12 m BELOW CD IN DEPTH
- 10 t/m²** FOR HEAVY LOADS (EQUIVALENT UNIFORMLY DISTRIBUTED LOAD) ON THE QUAY
- Located in a Protected Roadstead with Easy Access**
- Dedicated Workshop of 1375 m² with Bridge Crane 50 tons**
- Unrestricted Access to Open Sea & No Air Draft Restrictions**
- 1st** FRENCH PORT FOR SHIP REPAIR (3 Dry Docks)

### PORT OF LORIENT

A logistic hub for installation and maintenance:

- Sheltered and Accessible Bay: Unrestricted Access to Open Sea & No Air Draft Restrictions, Easy Access 24/7, Water Height of 9m (+6m50 Tidal Range)**
- 2.5 ha** 25 HA DEDICATED TO THE INSTALLATION STEP:
  - 800 LM OF QUAY
  - 13M CD DRAFT
  - RORO HANDLING
  - SUITABLE LIFTING EQUIPMENT INCLUDING A 30T CRANE AT 30M
- 1.5 ha** MAINTENANCE BASE AND ASSOCIATED SERVICES:
  - 15 HA
  - 100 LM OF QUAY
  - 3M CD DRAFT
  - CREW FACILITIES
- Ship Repair Area with Heavy Lift Cranes up to 650 T and 80 LM of Quay (8T/m²)**
- 14,001** ISO CERTIFICATION

## OFF-GRID SOLUTIONS

# to become self-sufficient in energy

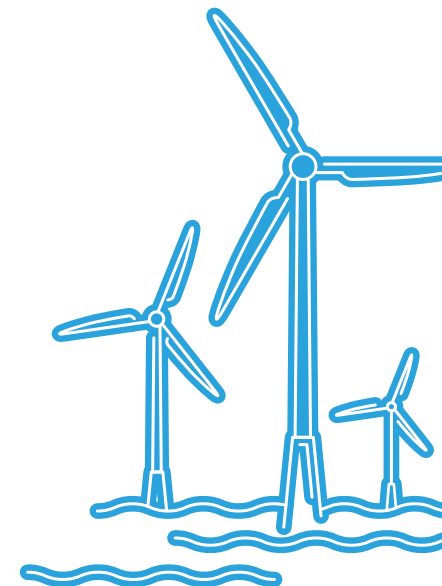
Ouessant Island is a **full-size demonstrator that proposes technical solutions to make it autonomous and integrating renewable marine energies.**

We operate on 3 levers:

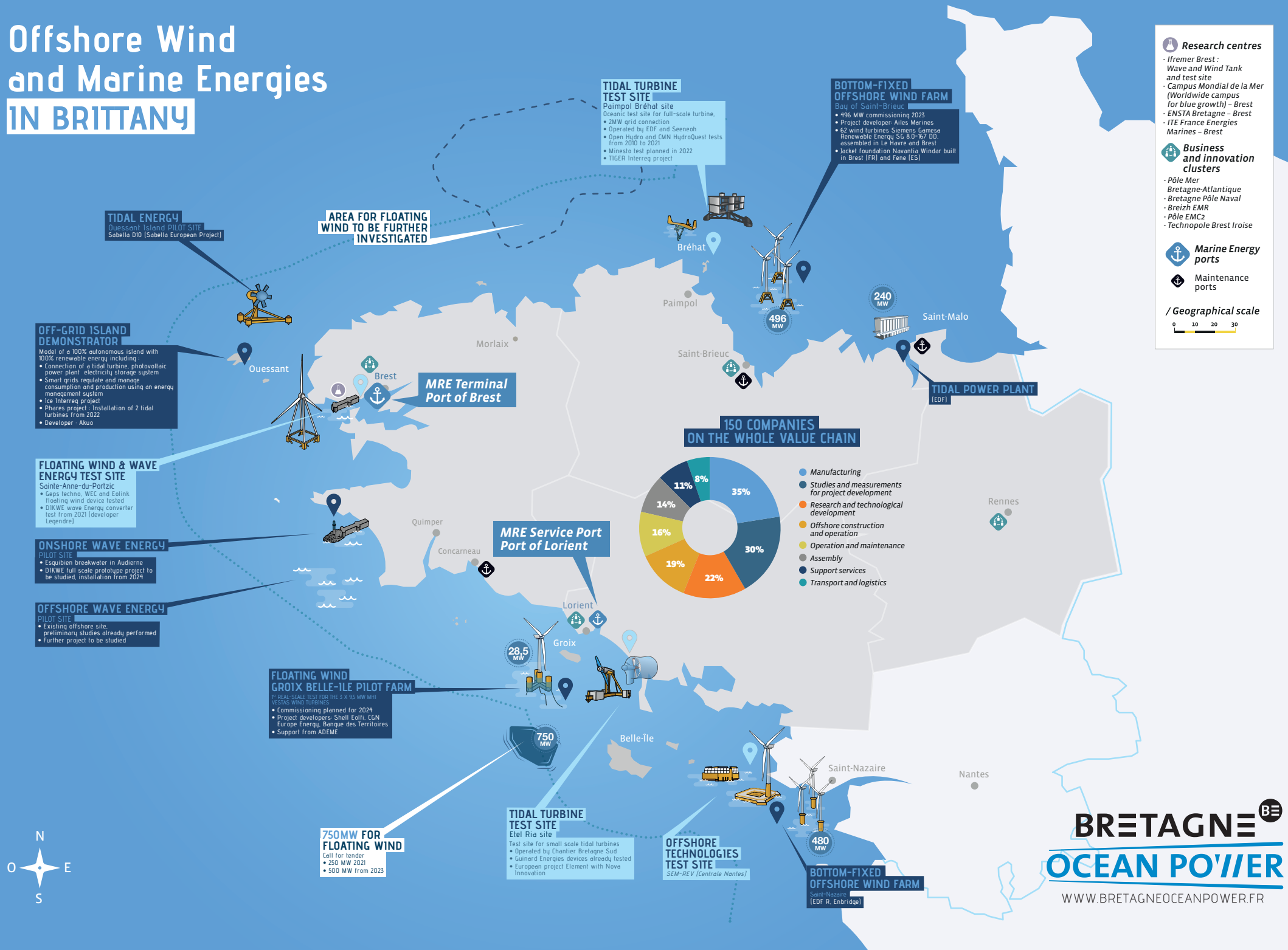
- Reduce and manage energy consumption
- Produce energy locally from sustainable sources
- Create and manage the local energy loop with a microgrid

This model can be extended to all territories that are isolated from a national electricity grid and wish to become autonomous and decarbonised.

Call us, we create the link with the companies who develop these solutions.



# Offshore Wind and Marine Energies IN BRITTANY



Team up  
**HARNESS**  
**OCEAN ENERGY**



**BRETAGNE<sup>BE</sup>**  
**OCEAN POWER**

**BRETAGNE<sup>BE</sup>**  
COMMERCE  
INTERNATIONAL

**BRETAGNE<sup>BE</sup>**  
DÉVELOPPEMENT  
INNOVATION

**BREIZH**  
EMR



UNION EUROPÉENNE  
UNANIEZH EUROPA



L'Europe s'engage  
en Bretagne / Avec le Fonds européen  
de développement régional



/ Have a project? Contact us!

**Philippe Thieffry**  
Head Officer at Bretagne Ocean Power  
p.thieffry@bdi.fr  
+33(0)2 97 30 27 90

[www.bretagneoceanpower.fr](http://www.bretagneoceanpower.fr)